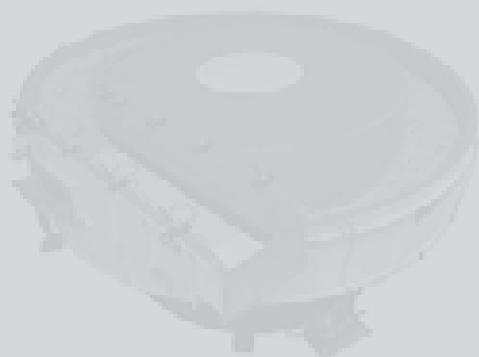
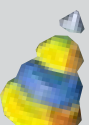


www.rosler.com

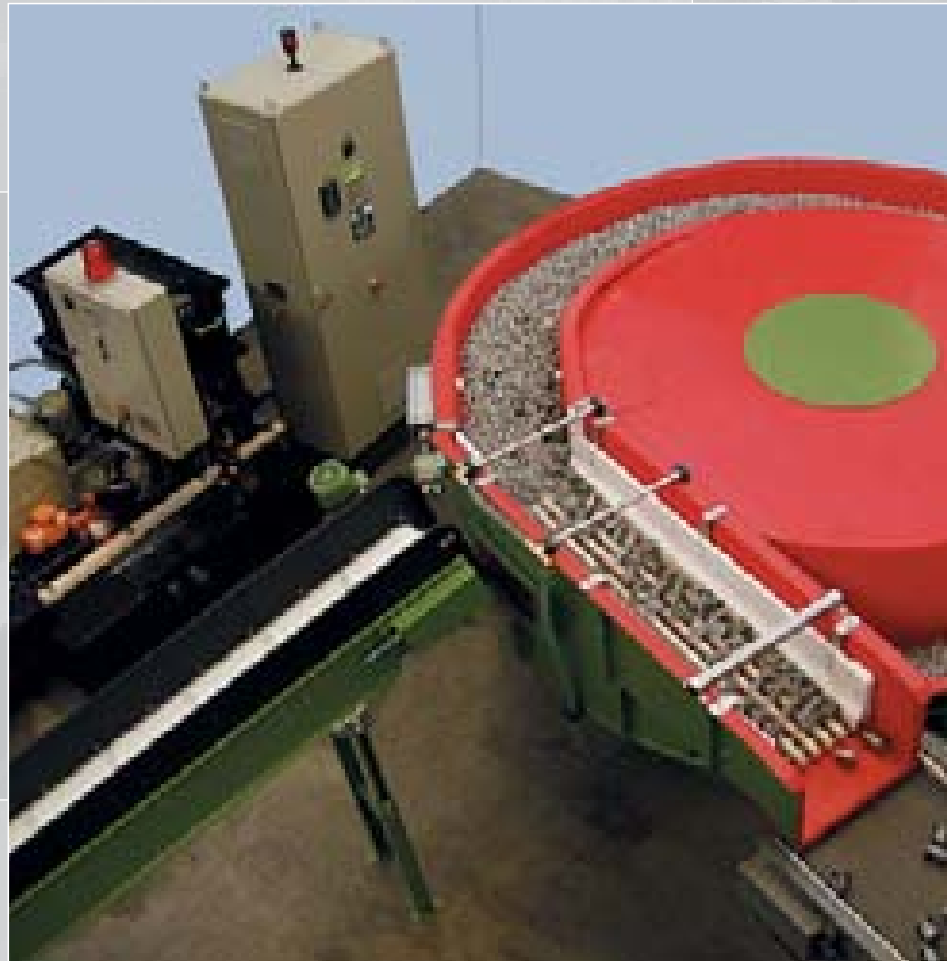


Long Radius Vibrators
Continuous-Flow and Batch Systems



Long Radius Vibrators

Rösler Long Radius vibratory finishing systems allow parts to be processed in either continuous-feed or batch mode. Their high degree of flexibility offers significant advantages for production planning, helping to reduce processing times and make the overall surface finishing process more economical. Last, but not least, their small footprint requires a minimum of floor space.



Media and compounds

Rösler offers the market's widest range of mass finishing consumables. Thanks to over 50 years of experience in product development, we have a product range of over 8,000 different compounds as well as ceramic and plastic media in all shapes and sizes. This wide array of products is available to customers worldwide.



Applications for Long Radius Systems

Long Radius systems are highly effective for deburring, grinding, radiusing (edge breaking) pressure deburring, polishing and ball burnishing of: stampings, castings, forgings and machined parts. Their biggest advantage is that the same machine is capable of both batch and continuous-feed operation.

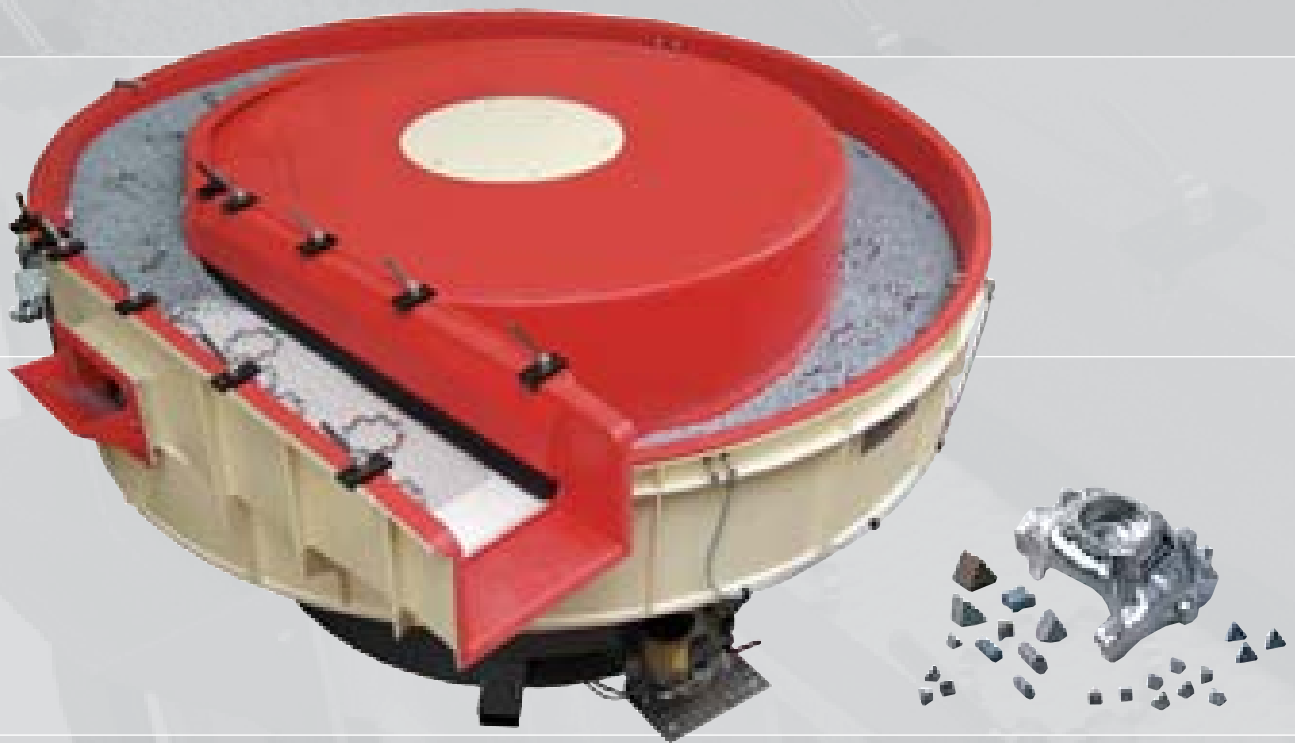
Functional principle

In the machine's work bowl, filled with grinding or polishing media, the parts are surface finished in either batch or continuous-feed mode. In order to finish the parts, vibration is induced, which causes the parts and the media to move against each other in a scrubbing action. Once the finishing process is complete, the internal screening device separates the parts from the media. Long Radius machines provide rinsing of the parts while they are being screened, as well as automatic removal of undersized media from the system.



Long Radius Machine Technology

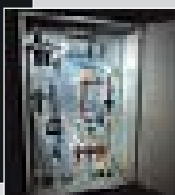
Rösler's Long Radius machines were designed as "spiral bottom" machines. The processing channel of the work bowl features a continuous ascent through its entire 360° circumference, from the parts infeed chute up to the built-in separation screen. For batch operation, Long Radius machines can be equipped with an optional pneumatically-activated separation flap. The parts infeed chute below the separation screen ensures easy loading of the raw parts into the machine.



Robust vibratory drive

The powerful vibratory drive system that was specifically developed for the Long Radius machines offers numerous features which are exclusive to Rosler:

- ▶ Direct drive imbalance motor with ample power reserve, virtually maintenance free
- ▶ Double flange fastening of the motor to the work bowl ensures 100% transfer of vibratory energy to the parts/media mass in the processing channel
- ▶ Imbalance weights easily accessible for quick adjustments to the vibratory intensity
- ▶ Variable motor speed provided via frequency converter, for extra operational flexibility



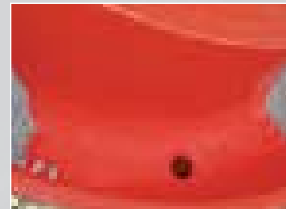
System controls

- ▶ User-friendly contactor controls (optional: PLC controls)
- ▶ Continuous speed adjustment of the motor
- ▶ Continuous control and monitoring of the water/compound dosing

Solenoid valves for control of process water flow and rinsing station. Flow controls and indicators for process water and compound are user-friendly and easy to read.

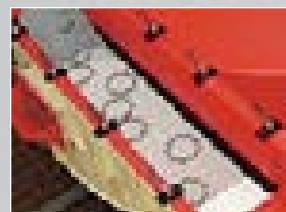
Engineered to the last detail

Evenly distributed process water entry points ensure intensive finishing action in the processing channel. Bottom drains are self-cleaning and easy to change, allowing quick drainage of the process water from the work bowl.



Separation

Quick and easy exchange of separation screens
Built-in rinsing station



Quick and easy media change

Easily accessible media discharge gate allows quick removal of the media from the work bowl.



Continuous flow or batch operation

Optional built-in pneumatically-activated separation flap allows continuous as well as batch operation.



Parts Loading

Parts load chute for continuous loading of raw parts into the Long Radius machine



Machine base

- ▶ Welded construction provides a solid, stable machine base
- ▶ Large access door facilitates easy adjustment of imbalance weights, and other maintenance operations.
- ▶ Vibration dampers minimize the transfer of vibration to the floor



Occupational safety

Custom-built sound absorbing cabins are available upon request.



Big results – with a small footprint

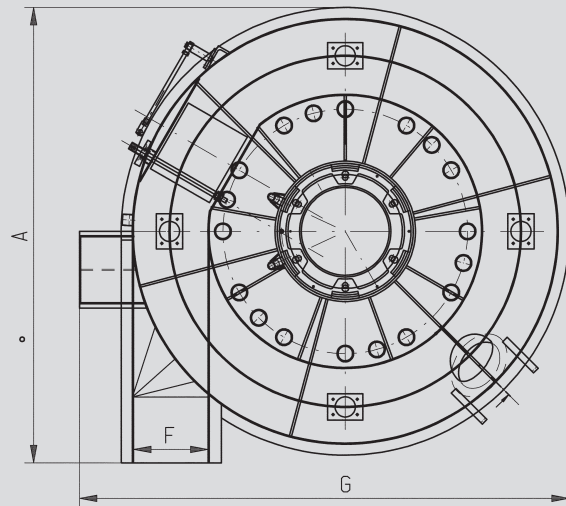
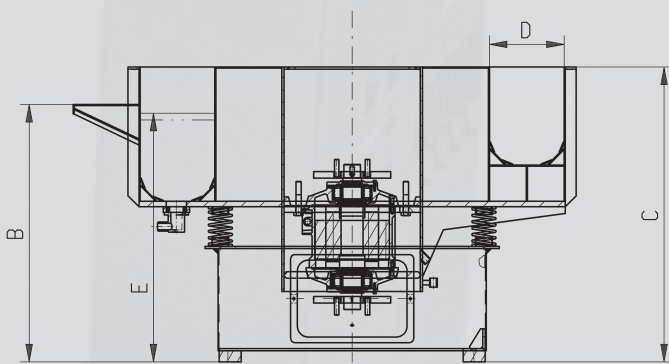
Whether as a stand-alone machine, or as part of a fully-automated system integrating proven Rösler loading and unloading components, Long Radius machines offer superior solutions to a wide variety of finishing requirements.

Technical Data:

	R 250/5 LR	R 310/5 LR	R 310/9 LR	R 400/9 LR	R 480/8 LR
Total length of processing channel (mm)	5000	5000	9000	9000	8000
A (mm)	2075	2075	3050	3050	3050
B (mm)	1170	1170	1170	1450	1450
C (mm)	1340	1340	1340	1675	1675
D (mm)	250	310	310	400	480
E (mm)	1130	1130	1130	1400	1400
F (mm)	250	310	310	400	480
G (mm)	2225	2235	3200	3200	3200
Total usable volume in dm ³ / cu ft	175 / 9	300 / 13.4	475 / 24.3	625 / 40.4	1030 / 55
Power in kW	7,5	7,5	7,5	16	22

date: 09/05





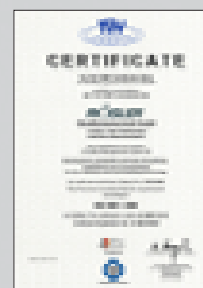
Clean environment – our commitment

A clean environment is an essential part of our company philosophy. In our production we use natural raw materials and recycled materials. Long maintenance intervals, the ease of maintenance of our equipment, concentrated compounds, and wear-resistant media, save valuable natural resources and contribute to a clean environment. The prevention of hazardous waste and the recycling of packing materials are an integral part of our production and sales policies.



Quality – made in Germany

For Rösler the word quality has deeper meaning than just faultless, reliable and long living products. Quality is an essential part of our work philosophy and is expressed in the personal sense of duty and quality found in each of our employees. Certification according to DIN ISO 9001 is living proof of our commitment to quality.



ISO 9001:2000



- D** RÖSLER Oberflächentechnik GmbH · Werk Memmelsdorf
Vorstadt 1 · D-96190 Untermerzsbach
Tel.: +49/9533/924-0 · Fax: +49/9533/924-300 · info@rosler.com
- RÖSLER Oberflächentechnik GmbH · Werk Hausen
Hausen 1 · D-96231 Bad Staffelstein
Tel.: +49/9533/924-0 · Fax: +49/9533/924-300 · info@rosler.com
- GB** RÖSLER UK
Unity Grove, School Lane · Knowsley Business Park · GB-Prescot, Merseyside L34 9GT
Tel.: +44/151/4820444 · Fax: +44/151/4824400 · rosler@rosleruk.com
- F** RÖSLER France
Z.I. de la Fontaine d'Azon · B.P. 513 – St. Clément · F-89105 Sens Cedex
Tel.: +33/3/86647979 · Fax: +33/3/86655194 · rosler@rosler.fr
- E** RÖSLER International GmbH & Co. KG
Sucursal en España · Polg. Ind. Cova Solera C/Roma, 7 · E-08191 Rubí (Barcelona)
Tel.: +34/93/5885585 · Fax: +34/93/5883209 · rosler@rosler.es
- I** RÖSLER Italiana S.R.L.
Via E. Vittorini 10/12 · I-20049 Concorezzo (MI)
Tel.: +39/039/611521 · Fax: +39/039/6115232 · info@rosler.it
- NL** RÖSLER Benelux B.V.
Reggestraat 18 · NL-5347 JG Oss · Postbus 829 · NL-5340 AV Oss
Tel.: +31/412/646600 · Fax: +31/412/646046 · info@rosler-benelux.nl
- B** RÖSLER Benelux B.V.
Avenue de Ramelot 6 · Zoning Industriel · B-1480 Tubize (Saintes)
Tel.: +32/2/3610200 · Fax: +32/2/3612831 · info@rosler-benelux.be
- A** RÖSLER Oberflächentechnik GmbH
Hetmanekgasse 15 · A-1230 Wien
Tel.: +43/1/6985180-0 · Fax: +43/1/6985182 · office@rosler.at
- CH** RÖSLER Schweiz AG
Staffelbachstraße 189 · Postfach 81 · CH-5054 Kirchleerau
Tel.: +41/62/7385500 · Fax: +41/62/7385580 · roeslerag@roeslerag.ch
- USA** RÖSLER Metal Finishing USA L.L.C.
1551 Denso Road · USA-Battle Creek · MI 49015
Tel.: +1/269/4413000 · Fax: +1/269/4413001 · info@roslerusa.com
- BR** RÖSLER do Brasil LTDA
Estrada dos Galdinos 35 · Jd. Barbacena · 06700-000 · Colia · São Paulo · Brasil
Tel.: +55/11/46123844 · Fax: +55/11/46123845 · rosler@rosler.com.br
- ZA** RÖSLER S.A. Surface Technologies
P.O. Box 7949 · No. 9 N1 Industrial Park · Samrand · 0046 Centurion · South Africa
Tel.: +27/12/657 0375 · Fax: +27/12/657 0649 · johanv@roslersa.co.za
- CN** RÖSLER – BEIJING
Office 11N, Tower A, Beijing Fu Hua Mansion · No. 8, Chaoyangmen North Avenue
Dong Cheng District · Beijing 100027 P.R. China
Tel.: +86/10/6554 73 86 · +86/10/6554 73 89 · Fax: +86/10/6554 73 87 · info@rosler.com.cn

- and more than 60 representations worldwide

